

Portable Security Cabins







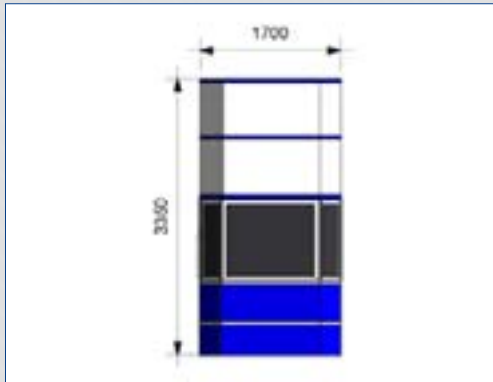
Portable Security Cabins by TSSC are inspired by the work of engineers and designers. As well as adhering to the highest standards of structural design, our experts listen to your requirements for your guardhouse / security cabins. Whether custom suit or standard, there are extensive features to choose from.

The floor plans of our portable cabins are designed to comfortably accommodate one or more people. Interior features include washrooms, storage, desks & chairs, bathroom amenities, air-conditioning, furniture, etc. There is a broad palette of colors and finishes to choose from for interiors and exteriors. The entire Security Cabins range is overall energy efficient, with durable materials applied for long-term and low-maintenance.

TSSC delivers fast, innovative solutions for guardhouses/ security cabins. As the leader in modular buildings, and backed by decades of manufacturing expertise, we provide turn key solutions.

Elevation and Floor plan

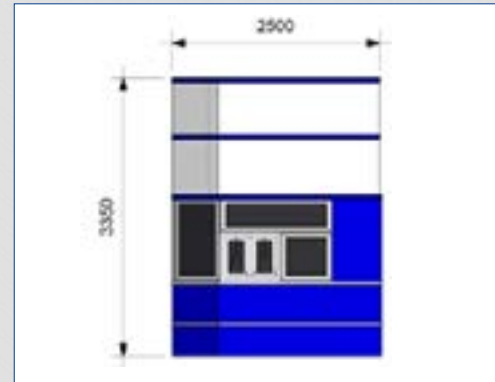
Without Washroom



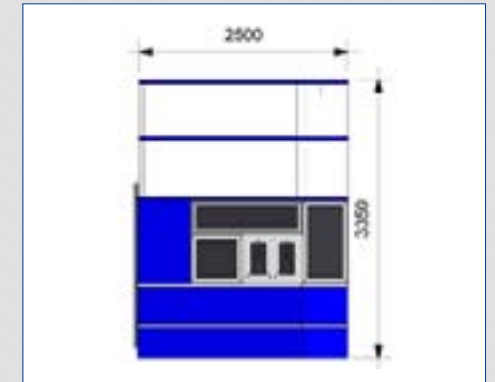
East



West

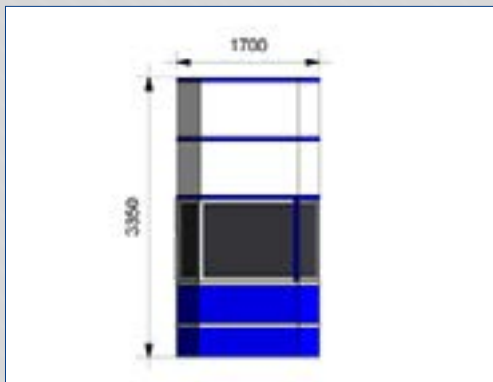


North

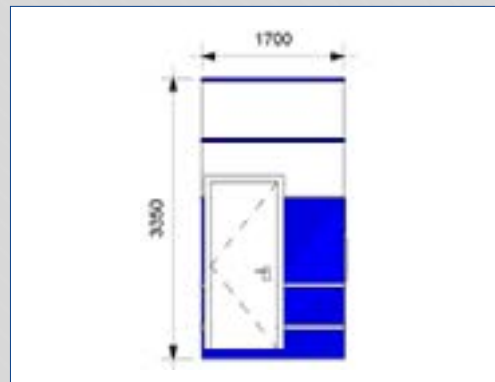


South

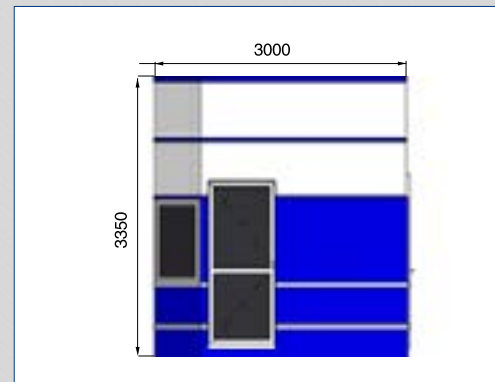
With Washroom



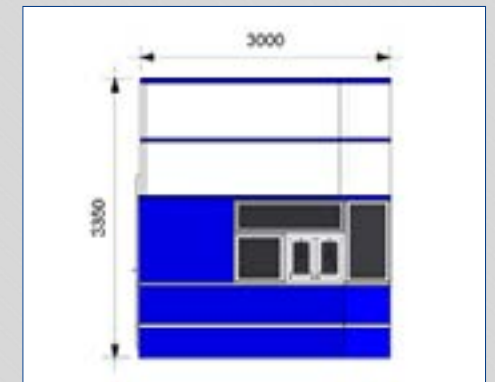
East



West



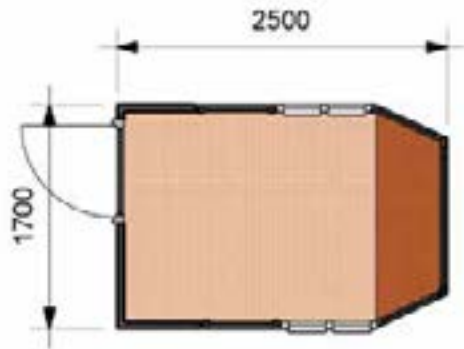
North



South

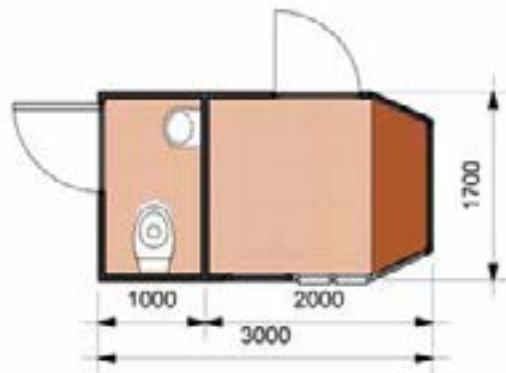
SD Cabin

Without Washroom



1.7m W x 2.5m L x 3.35m H

With Washroom

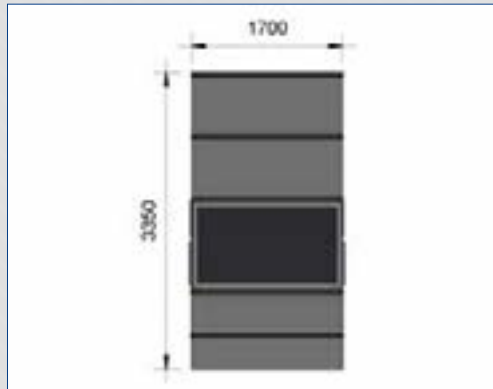


1.7m W x 3m L x 3.35m H

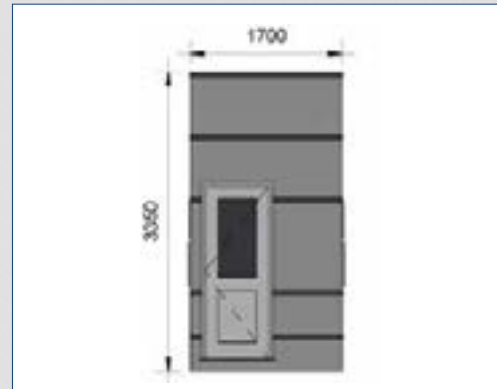


Elevation and Floor plan

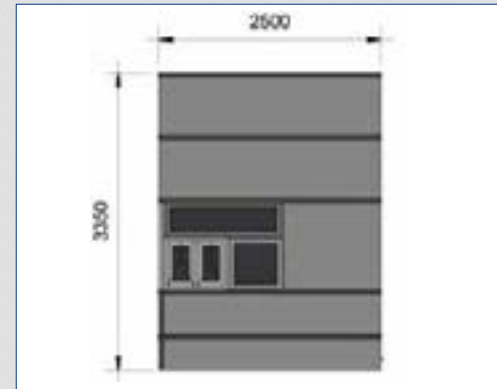
Without Washroom



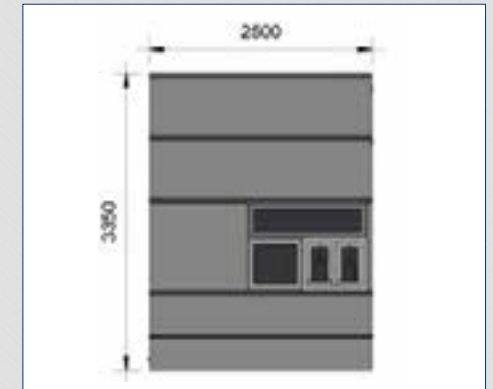
East



West

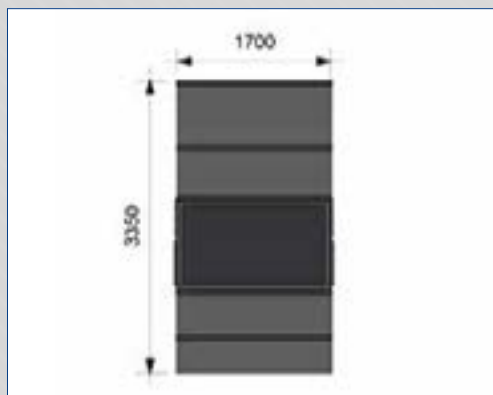


North



South

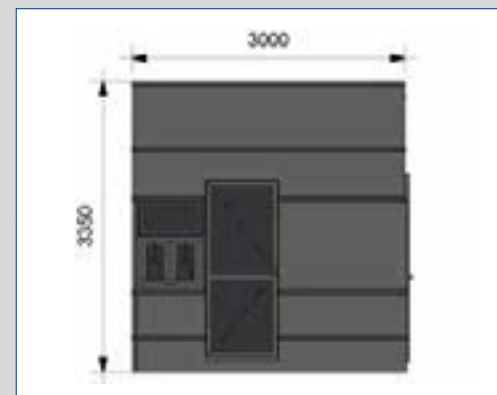
With Washroom



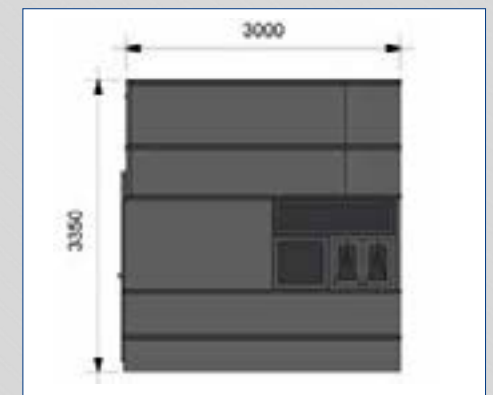
East



West



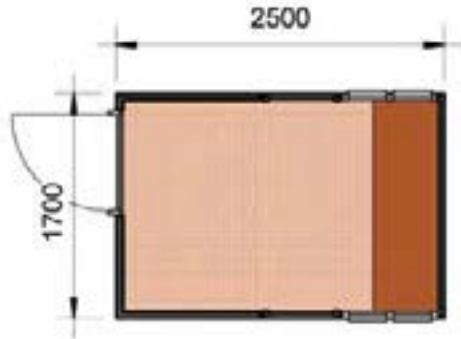
North



South

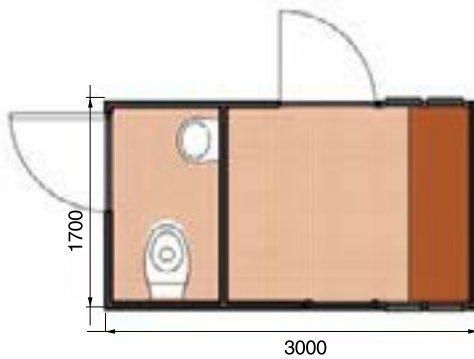
S Cabin (Square)

Without Washroom

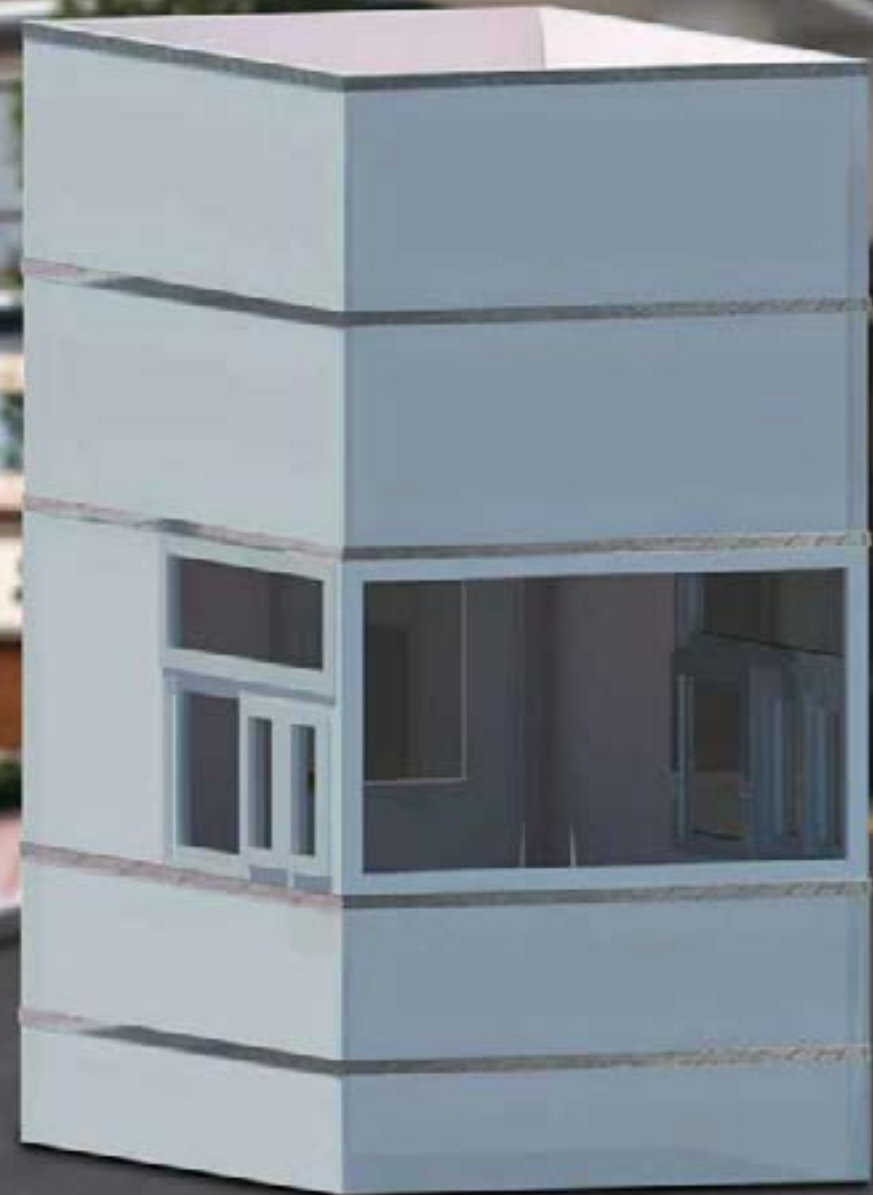


1.7m W x 2.5m L x 3.35m H

With Washroom



1.7m W x 3m L x 3.35m H



Elevation and Floor plan



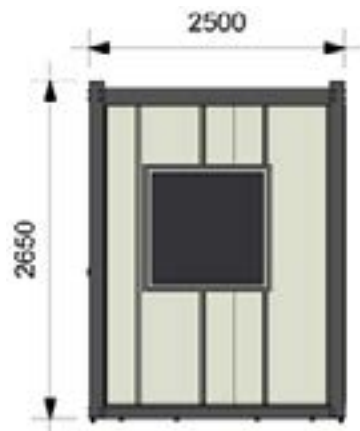
East



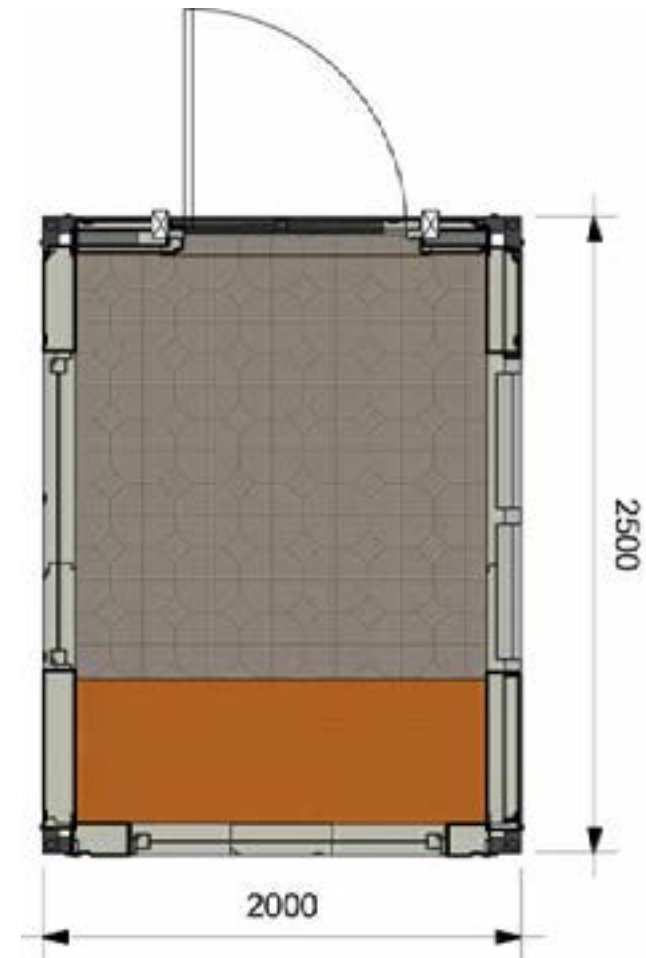
West



North



South



2m W x 2.5m L x 2.65m H

2m W x 1.5m L x 2.65m H

CRS - SC Cabin



Features

- **Robust and Durable Structure**
- **Good Fire Resistance**
- **Excellent Acoustic Properties**
- **Water and Termite Resistant.**
- **Compact & Spacious**
- **Good Thermal Comfort.**
- **Excellent Aesthetic Look.**
- **Can be customized to specific requirements.**
- **Thermally Efficient- Insulated panel provide insulation against hot and cold climates.**



Take advantage of our renowned expertise and industry-wide resources. Find out why small industries to large government departments seek our services in designing and constructing portable cabins.

From consultation to installation, we work closely with you to swiftly deliver the security cabin. Go for the Best!

Russia, 141503, Moscow region,
district,
Solnechnogorsky, Solnechnogorsk city,
P.O.Box:141503
Tel:+7 495 4 090050

Moscow-Russia
Business Center : Прогресс Плаза
Tel: +7 495 0551333



Technical Supplies & Services Co. L.L.C.

Dubai Investments Park - UAE
P.O. Box: 77031
Tel: +971 4 8850474
Fax: +9714 8850343

Sharjah - UAE
P.O. Box: 1818
Tel: +971 6 5341344
Fax: +9716 5341686

Abu Dhabi - UAE
P.O. Box: 43135
Tel: +971 2 6768748
Fax: +971 2 6773726

Riyadh Industrial Area 2 - KSA
P.O. Box: 40814
Tel: +966 1 4483344
Fax: +966 1 4488341

www.harwal.ru or email: info@harwal.ru
www.harwal.net